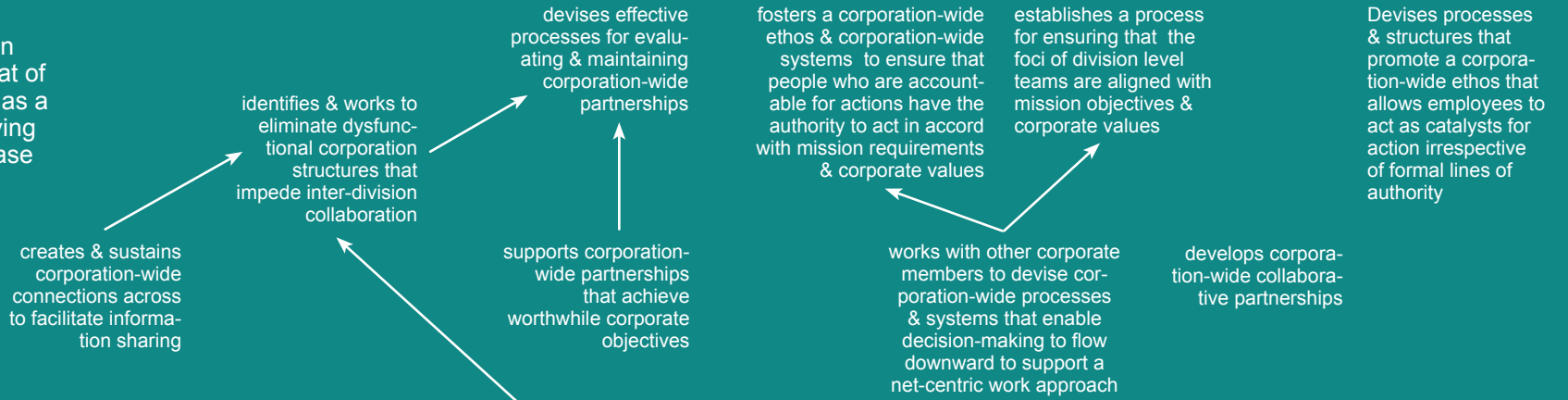


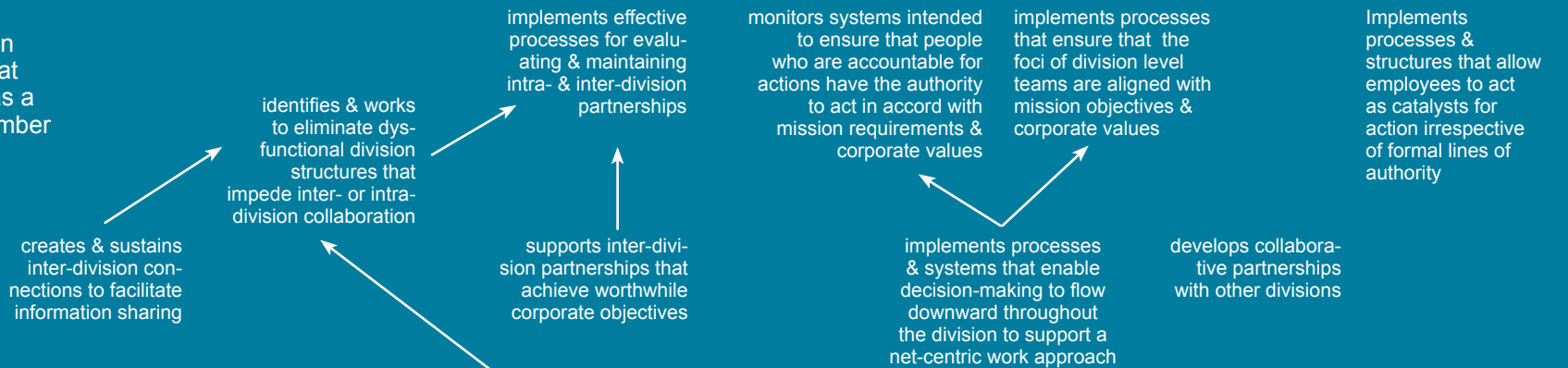
# L4

Integrated action orientation is that of the corporation as a community serving the customer base



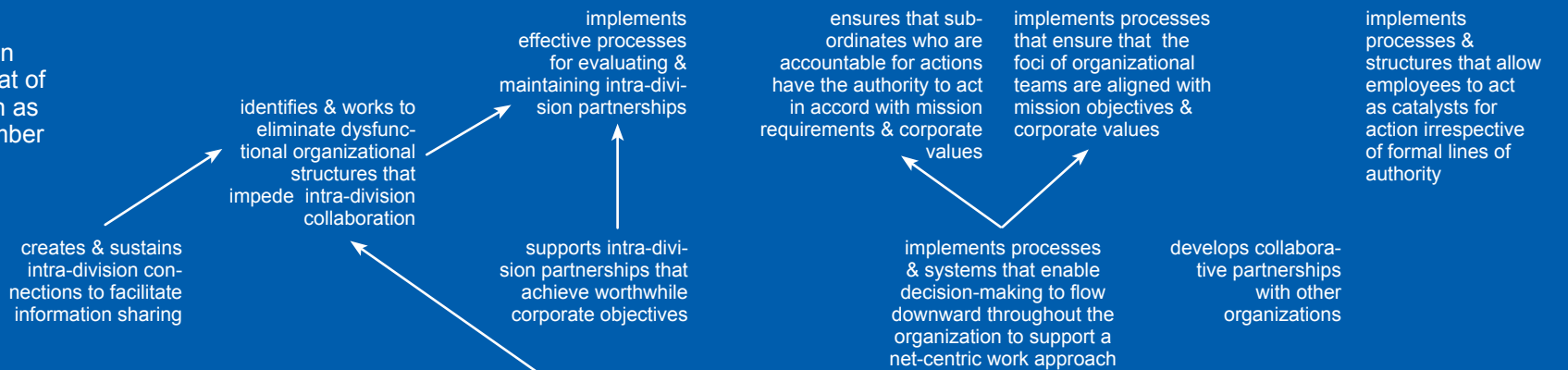
# L3

Integrated action orientation is that of the division as a corporation member



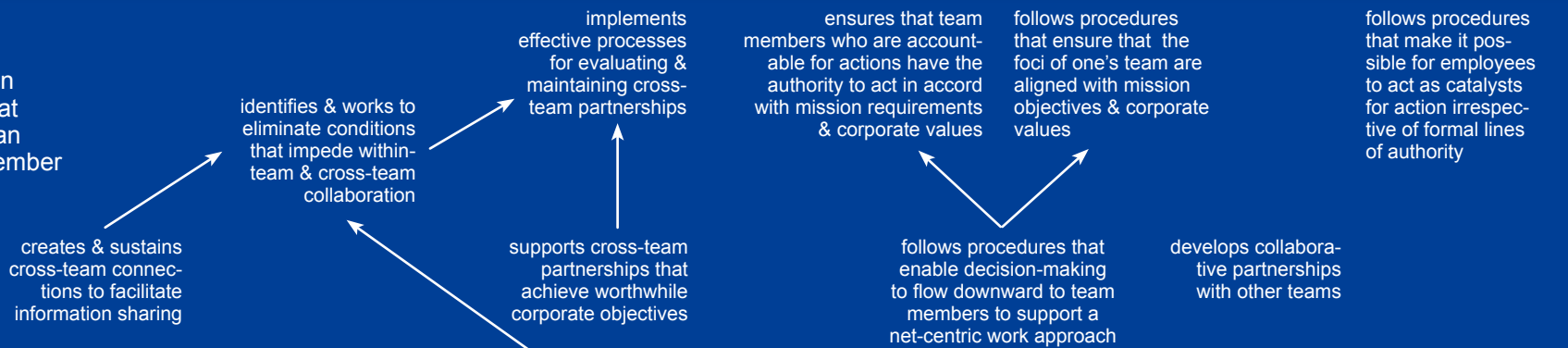
# L2

Integrated action orientation is that of the organization as an division member



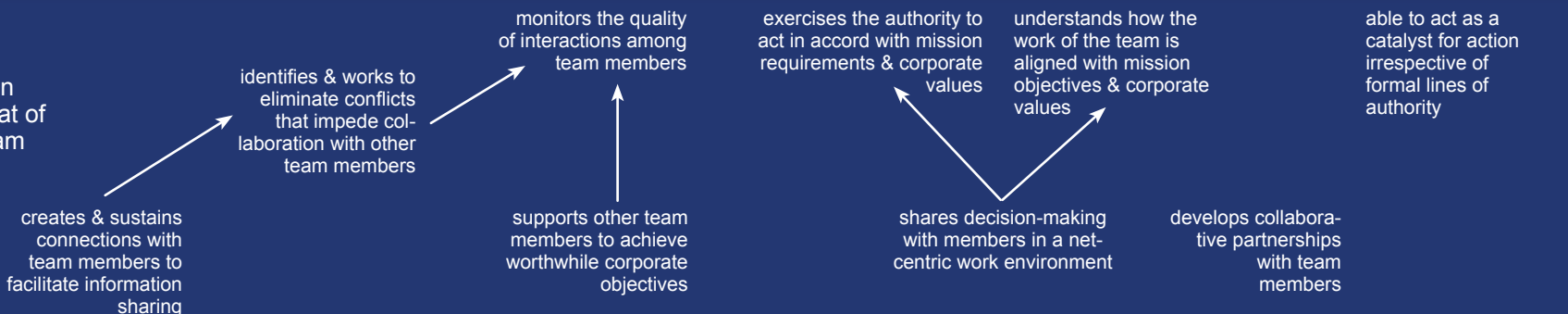
# L1

Integrated action orientation is that of the team as an organization member



# L0

Integrated action orientation is that of the self as a team member



understands the importance of strategic partnerships

pro-actively builds connections

breaks down barriers

supports partnerships

establishes net-centric processes

influences without formal authority